



Furl is located in North West London, on the opposite side of the North Circular to IKEA. So most of you already know where we are!

Sat Nav's aren't great at finding us, in fact our own postcode directs you half a mile away from the correct location, so we've compiled the following directions for travel by car, bus and tube.

A great landmark to use when finding us is the wind turbines that are situated on our Industrial park.

Find us easily on Google Places. Just click the following link which gives an example route from SW7.

Simply change the starting point to get your route!

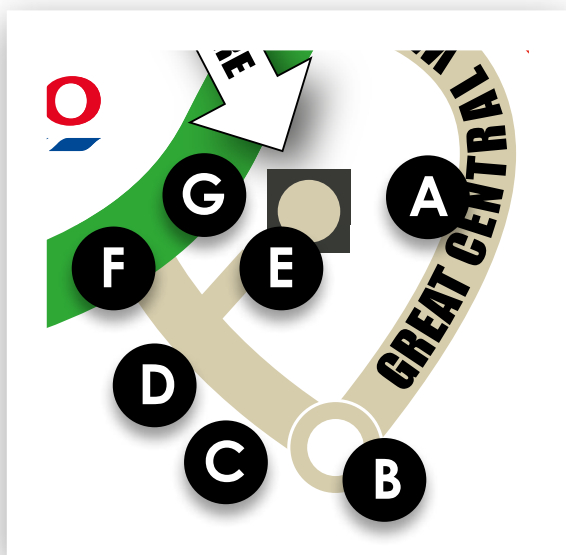
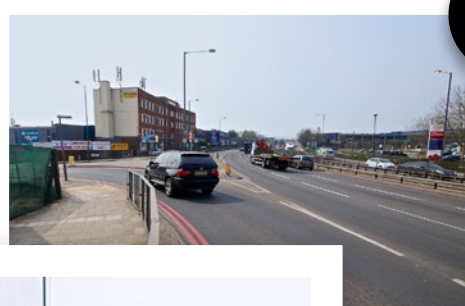
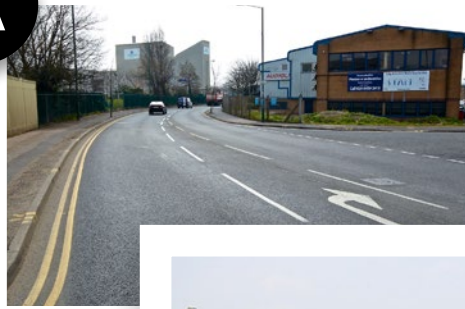
▶ goo.gl/maps/XAMuu



By Road

Use Post Code NW10 0UF in your sat nav. This will bring you to Iron Bridge Close (A). Drive towards point (B) and turn right at the roundabout. Head along Great Central Way (C) until you reach the entrance to Propellor Park (D). Turn into the park and our unit (E) is almost the last on the right.

If you are approaching via the North Circular Road you will cross an iron bridge within 200m of Propellor Park. Look out immediately for the propellers on the left and then take the next left (F). Immediately after turning, (G) Propellor Park is only 50m on the left (D). Turn into the park and our unit (E) is almost the last on the right.



By Bus & Tube

It's easy and convenient to get to us using public transport.

Neasden Tube station (A) requires a 5 minute walk via a walkway that brings you out to the Iron Bridge on the North Circular Road. When exiting the Tube station, turn left and after 50m left again where you will see an entrance to the walkway (B). When you reach the road, turn left and walk over the iron bridge before turning left (C) onto Grand Central Way and then left again into Propellor Park (D), with our unit almost last down on the right.

The bus stops (E) (F) are right outside Propellor Park. We're served by a number of London Transport bus routes, 206, 224, 232 and 332.

